



PROUDLY
MADE IN
SWEDEN

2015/16

Woolpower[®]
ÖSTERSUND





WARMTH FROM ÖSTERSUND SINCE 1972

Östersund is a small town in Jämtland, northern Sweden; a region filled with vast mountains, forests and lakes. This is where you'll find our factory, and it's where we developed our unique material for thermal undergarments and socks, Ullfrotté Original, already back in 1972.

Today our garments are sold worldwide under the brand name Woolpower. People wear them in their daily lives, at work as well as for outdoor activities. People who don't want to have to think about whether their clothes will hold up, regardless of the weather conditions.

As a manufacturing company, ethical and environmental thinking are core values for us. Throughout the entire value chain, from the birth of the lamb, the production of the wool we use, to our manufacturing process and how we handle waste material, we uphold these values closely.

This results in highly functional products that are made to last. There's a nametag inside all Woolpower garments featuring the name of the seamstress who made it. It's not only a mark of quality; it also shows how proud we all are at Woolpower of our company and our products.

What's new for the 2015-2016 season? Well, we're totally renewing our LITE collection, including five new models and an upgrade to all the other garments in the range. Also, following the success of our insoles made of recycled wool, we are also launching slippers in the same material. And of course, in our Ullfrotté Original collection, you'll find styles and colours that are clear favourites for outdoor enthusiasts, whatever the climate.

A warm welcome
to **Woolpower**

WOOLPOWER QUALITY IN EVERY SENS

Woolpower is living proof that a clothing company can provide reasonable salaries, safe employment and a working environment that people enjoy being in. Ever since our factory opened in Östersund in 1972 all our garments have been sewn here. That's how we want it to be so that we can maintain the highest quality possible.

CIRCULAR KNITTING

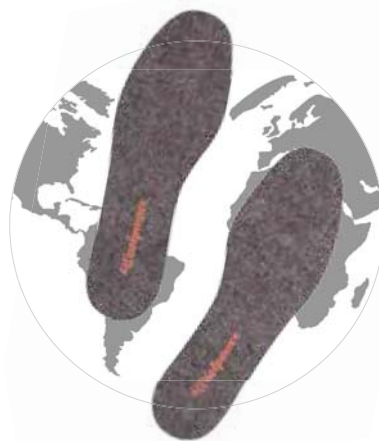
Each year, around 200 tons of merinowool yarn are delivered to the factory in Östersund. This is where the knitting starts. When we make our Woolpower garments we use circular knitting machines to produce the sleeves, legs, body and socks. Using this technology means that garments have the minimal amount of seams for the best durability and comfort.

OUR EXPERIENCED SEAMSTRESSES

At Woolpower one seamstress is responsible for an entire garment, from the very first to the very last stitch. This makes her work more varied and develops her workmanship. Once the seamstress completes a garment and approves it, she attaches a label with her own name on it. This label is her – and Woolpower's – seal of quality.

A WARM COMPANY

So you could say that warmth is doubly our thing. We make warm woollen products, and we also aim to be a warm company that takes good care of its employees, partners, animals and the environment.



SUSTAINABILITY

Having our own factory in Östersund gives us a great opportunity to work with our environmental footprint. During the last year we've taken another important step towards our sustainability goals. Waste fabric from our production line now gets recycled into our popular felt insoles. We're also just starting to manufacture Woolpower Slipper from the same comfortable material. Our production is certified in accordance with ISO standards. The material Ullfrotté Original is certified by Oeko-tex, an international human-ecology label that shows that the garments contain no toxic or harmful substances.

Woolpower
ÖSTERSUND



Name: Eleonor H. Lubell
Occupation: Seamstress

Works at Woolpower in Östersund
since 2007

"I'm proud to be the one who
has the last word when it comes
to approving a garment. That's
something I feel totally comfortable
with since I've sewn the whole
garment myself."



ULLFROTTÉ ORIGINAL INVENTED TO LAST

The unique Ullfrotté Original material was developed in collaboration with the Swedish military in the early 1970's. The result was a garment with great insulation properties and unique moisture management. It's a wear-resistant fabric that actually makes you feel warm and dry even when moist.

SYNTHETICS ADD STRENGTH

Merino wool is a material that has excellent temperature regulation properties, but its wear resistance is not optimal. To bolster Ullfrotté Original's wear resistance, the Merino wool is mixed with one-third synthetics. This gives the garment the strength needed to meet the high quality standards of Woolpower.

TERRY LOOPS TRAP THE AIR

Ullfrotté Original is knitted so that one side of the fabric is flat and the other has smooth terry loops. It is the terry loops in combination with the loose knit wool fibres that make our garments capable of trapping such a great amount of air. Up to 80 percent of Ullfrotté Original actually consists of air. The terry surface also offers the benefit of moving moisture away from the skin.

WASHING

Wool is self-cleaning and does not retain odor even after long period of use. This means that you do not have to clean your Ullfrotté garments that often. When you do want to wash them, all Woolpower garments can be machine washed in hot water at 60 °C (140 °F) and tumble-dried at medium heat. This is a great feature considering that humid conditions promote bacteria growth and certain soil bacteria will not die until the clothes are washed at 60 °C (140 °F).

Ullfrotté
ORIGINAL





MERINO WOOL A REMARKABLE MATERIAL

Temperature regulation is one of the most important functions in comfortable underwear. Wool has remarkable characteristics that no science lab has yet been able to replicate synthetically. In all Woolpower garments we use Merino wool, a perfect fibre to insulate against both heat and cold.

TOGETHER WITH OUR SUPPLIERS

We purchase our merino wool from the Argentinian part of Patagonia and Uruguay. There, we have a constant dialogue with our suppliers about animal treatment and the sheep farmers' impact on the environment. Of course, we only use guaranteed mulesing free wool.

WOOL FOR INSULATION

Merino wool is the perfect material to use when you want to stay warm. The secret is in the air, the more air you can trap around the body, the more heat you can retain. And the crimply structure of the wool fibre traps large quantities of air. Merino wool has up to 40 creases per centimetre, which provides a remarkably high degree of insulation.

WARM EVEN WHEN MOIST

The natural wool fibre also works together with your body when you get wet. Wool can absorb up to 30 percent of its dry weight in moisture without feeling damp. So it keeps you warm – and it also transports moisture away so that you feel warm and dry for longer.

NON-ITCHY THICKNESS

The quality of wool is measured in microns. Fine quality wool is between 17 and 23 microns; this is when wool is perceived as soft and non-itchy. The Merino wool used in our own Ullfrotté Original material is 22.5 microns, resulting in a comfortable, non-itchy material that is still thick enough not to break easily.

CLOTHES DON'T PROVIDE HEAT

BUT YOUR
BODY DOES

A SYSTEM FOR HEAT REGULATION

When the weather is cold, the best way to stay warm is by following our layering system. Layered clothes help you retain your body heat. At the same time they transport away moisture and the excess heat that your body doesn't need.

CHOOSE THE RIGHT THICKNESS

Woolpower has developed an entire collection of garments for the whole body that can be combined differently depending on the temperature and form of activity. Our fabric, Ullfrotté Original, is produced in varying thicknesses for different functionality and benefits. The thickness of the material is measured in grams per square meter: 200, 400 and 600 g/m².

Ullfrotté
ORIGINAL





1

200 g/m² for underwear

Start with a heat-insulating and moisture-transporting undergarment closest to your body. Ullfrotté original 200 g/m² keeps your body at just the right temperature and also helps remove moisture at the same time. All Woolpower's 200 g/m² garments are circular knit, which means they don't have any uncomfortable seams that can chafe and break.

2

400-600 g/m² for insulation

Add one of Woolpower's tighter-knitted Ullfrotté garments as a mid-layer to increase insulation between the base layer undergarment and your wind and water resistant outer layer. Mid layer garments are often used in colder temperatures and at less strenuous activity levels. Woolpower makes these in 400 and 600 g/m².

3

Layer 3 should be a wind and water resistant outer shell that protects you against external cooling and keeps your heat trapped between the base and mid-layers.

4

A wind-proof outer layer made of down or another synthetic insulator is easy to put on and take off over your shell. It's useful for breaks or when it's time to set up camp.

Woolpower[®]
ÖSTERSUND

Lite

Woolpower®
OSTERSUND

BASE LAYER LITE

The Woolpower LITE product line was first launched in 2011 to meet market demand for a thinner, cooler alternative to Woolpower's Ullfrotté Original.

The LITE fabric is flat-knitted which gives more direct contact against the skin than Woolpower's Ullfrotté Original fabric. That means that heat is conducted more easily from the skin and out through the garment. This in turn makes the LITE products perfect as a cooler alternative, for high-level activity and/or warmer temperatures. Woolpower LITE stretches the season for Woolpower garments, and can be used all year around.

A 19.5-micron merino wool is combined with 20% polyamide fibre to create a stronger and more durable garment. Function remains the primary focus. There are no more seams than absolutely necessary and the fabric is very soft, smooth and stretchy. LITE is made of 1x1 rib knit fabric with colour-contrasting, light green seams.

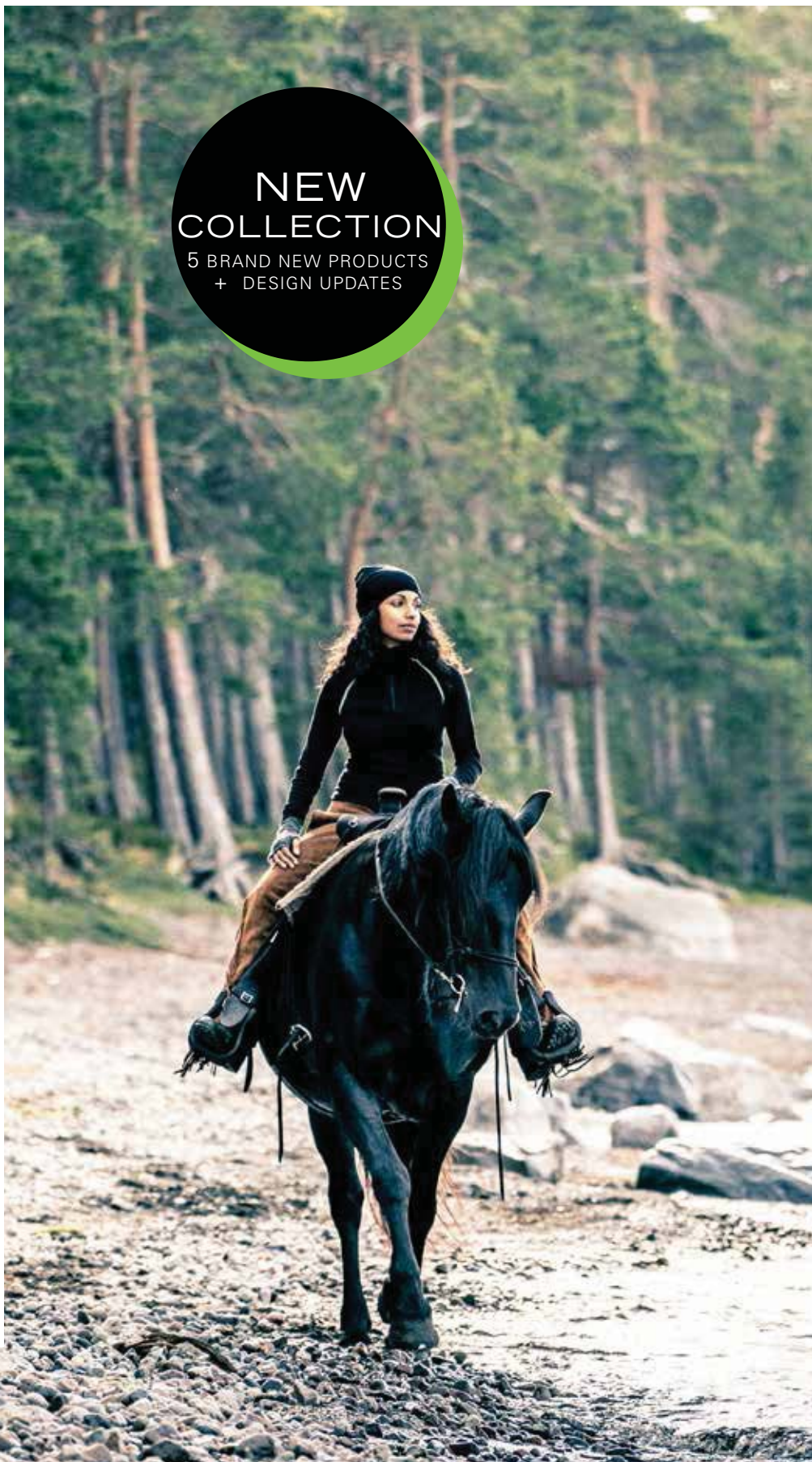
LITE still provides insulation, but more importantly its merino wool adapts to temperature and activity level.

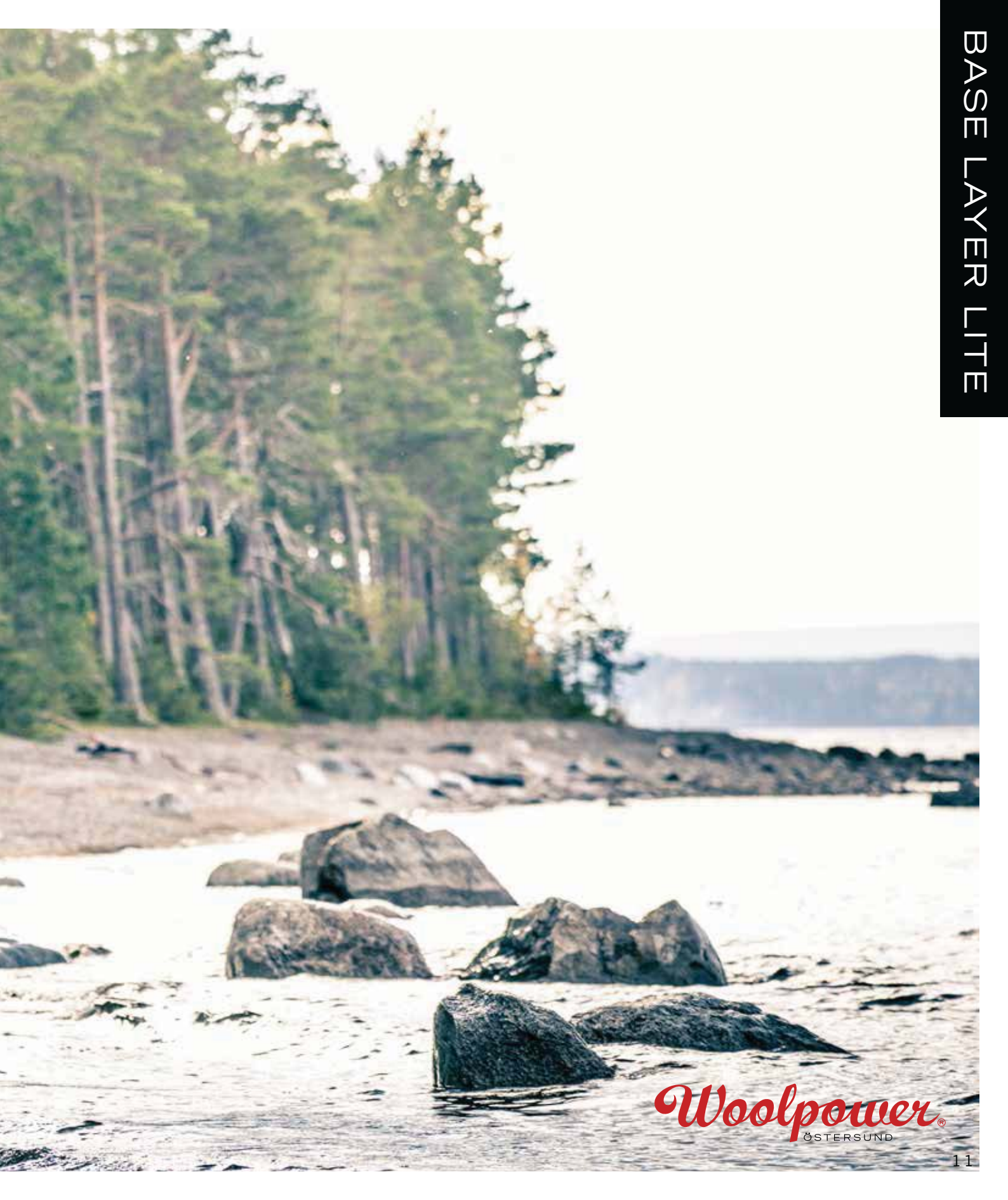
The new LITE collection creates a complete product range, with an improved, more stylish fit and comfort level.

80% MERINO WOOL
20% POLYAMIDE



NEW
COLLECTION
5 BRAND NEW PRODUCTS
+ DESIGN UPDATES





Woolpower[®]
ÖSTERSUND

NEW



ZIP TURTLENECK LITE

Art no: 7221

The higher collar offers better protection in cold weather and can be zipped down for ventilation. Lengthwise seams which are placed further back for optimal comfort. The sleeves have raglan seams to prevent rub when carrying a backpack. Longer back to prevent gaps.

XXS - XXL



NEW DESIGN



CREWNECK LITE

Art no: 7111

Lengthwise seams which are placed further back for optimal comfort. The sleeves have raglan seams to prevent rub when carrying a backpack. Longer back to prevent gaps.

XXS - XXL



NEW DESIGN



TEE LITE

Art no: 7101

Lengthwise seams which are placed further back for optimal comfort. The sleeves have raglan seams to prevent rub when carrying a backpack. Longer back to prevent gaps.

XXS - XXL



NEW DESIGN



LONG JOHNS W's LITE Art no: 4341

LONG JOHNS M's LITE Art no: 6341

Made to provide insulation and moisture vapour regulation. A unique design with only one lengthwise seam and no inseam. Smooth elastic waistband with knitted-in logo.

XXS - XL



S - XXL



NEW



3/4 LONG JOHNS W's LITE Art no: 4331

3/4 LONG JOHNS M's LITE Art no: 6331

Made to provide insulation and moisture vapour regulation. A unique design with only one lengthwise seam and no inseam. For optimal usage wear with high socks. Smooth elastic waistband with knitted-in logo.

XXS - XL



S - XXL



NEW



BRIEFS XLONG LITE W's Art no: 4311

BOXER XLONG LITE M's Art no: 6311

Designed to be worn as undergarments. Provide greater insulation and moisture vapour regulation. The longer model gives extra warmth to large muscle groups. Smooth elastic waistband with knitted-in logo.

XXS - XL



S - XXL



TUBE LITE

Art no: 9601

Tube that can be used as a neck gaiter, head-band or beanie. 50 cm long



ONE SIZE



BEANIE LITE

Art no: 9621

Snug fitting beanie with double layered fabric for optimal insulation.



ONE SIZE



BALACLAVA LITE

Art no: 9651

NEW

Snug fitting balaclava. Thin but still offers great protection in cold weather. The flat-lock seams prevent chafing so the balaclava can be used under a helmet.



ONE SIZE



NEW

NEW DESIGN



HIPSTERS W's LITE

Art no: 4301

Designed to provide insulation and moisture vapour regulation. This is a low cut model with the usual great properties of merino wool. Smooth elastic waistband with knitted-in logo.

XXS - XL



BOXER BRIEFS M's LITE

Art no: 6321

Designed to be worn as undergarments. Provide greater insulation and moisture vapour regulation. Smooth elastic waistband with knitted-in logo.

S - XXL



REFERENCES LITE



SIZE	SIZE	COLOUR
XXS 10	L 66	BLACK 00
XS 20	XL 70	
S 30	XXL 80	
M 55	ONE SIZE 00	

BASE LAYER

200 g/m²

This is our thinnest undergarment in terry-knit Ullfrotté Original, designed to be worn directly against the skin.

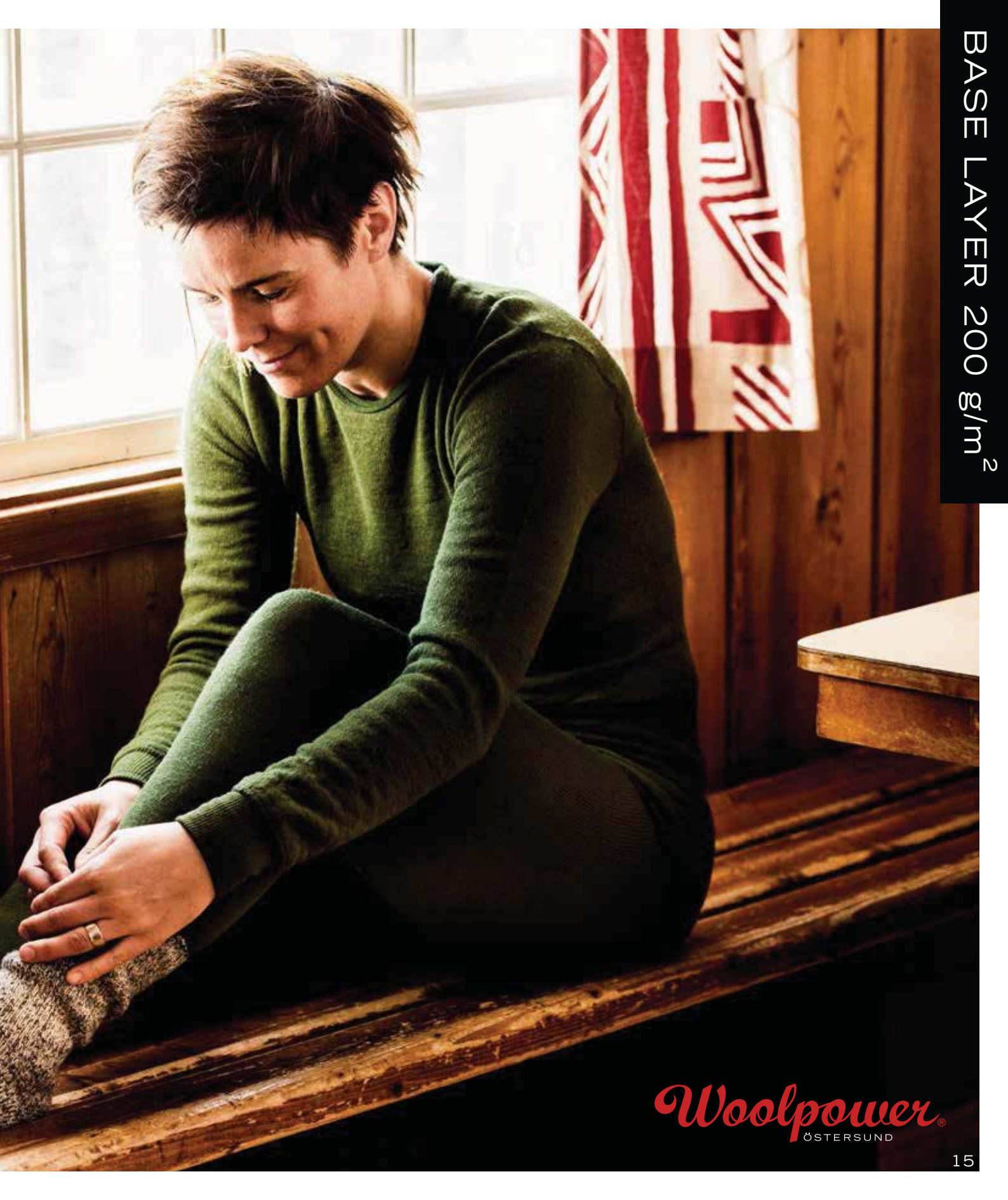
It is also great in combination with Woolpower LITE.

By wearing them closest to the body, you will benefit from all the best functions teery loops wool garments provide:
insulation, perspiration transport and comfort.

200 g/m²

60% MERINO WOOL
25% POLYESTER
13% POLYAMIDE
2% ELASTANE





BASE LAYER 200 g/m²

Woolpower[®]
ÖSTERSUND



TEE 200

Art no: 7102

Short sleeve crewneck made of a circular knit fabric, and has no lengthwise seams. Cuffs are elastic.

XXS - XXXL



CREWNECK 200

Art no: 7112

Long sleeve crewneck made of circular knit fabric, and has no lengthwise seams. The back is longer to prevent gaps. Cuffs are knitted in.

XXS - XXXL



ZIPTURTLENECK 200

Art no: 7222

Long sleeve turtleneck has a short zipper for ventilation, is made of circular knit fabric, and has no lengthwise seams. The back is longer to prevent gaps. Cuffs are knitted in.

XXS - XXXL



LONG JOHNS WITH FLY 200

Art no: 6342

Long Johns are made of circular knit fabric, and have no lengthwise seams. A gusset in the back ensures optimal comfort. Cuffs are knitted in. With fly.

S - XXXL



LONG JOHNS 200

Art no: 7342

Long Johns are made of circular knit fabric, and have no lengthwise seams. A gusset in the back ensures optimal comfort. Cuffs are knitted in.

XXS - XXXL



3/4 LONG JOHNS 200

Art no: 7332

3/4 Long Johns are made of circular knit fabric, and have no lengthwise seams. A gusset in the back ensures optimal comfort. Cuffs are knitted in. Ends below the knee.

XXS - XXXL





ONE PIECE SUIT 200

Art no: 7382

One piece suit has a full front, two-way separating zipper, crewneck, and is made of circular knit fabric. The cuffs are sewn in on the sleeves.

S - XXXL



Woolpower
ÖSTERSUND

REFERENCES BASE LAYER



SIZE	COLOUR		
XXS	10	BLACK	00
XS	20	GREY	10
S	30	RED	65
M	55	DARK NAVY	89
L	66	GREEN	98
XL	70		
XXL	80		
XXXL	90		

MID LAYER 400–600 g/m²

These thicker garments are used as mid layers to increase insulation between the base layer and the wind and water resistant outer layer.

The mid layer garments are usually used at lower temperatures and lower activity levels.

The standard mid layer jackets are longer in the back and in the cuffs, which also have thumb-holes.

400 g/m²

70% MERINO WOOL
28% POLYAMIDE
2% ELASTANE

600 g/m²

70% MERINO WOOL
30% POLYAMIDE



DID YOU KNOW?

Water conducts heat 25 times more effectively than air does. That's why it's so important to remove moisture away from your skin. When wool transports moisture away from the skin it creates 'absorption heat'. This is when heat energy is released as water molecules and the fibre's molecules collide. The process continues until the fibre is saturated with water molecules.

Woolpower[®]
ÖSTERSUND



FULL ZIP JACKET 600

Art no: 7236

Full zip jacket has a high, double thick collar as well as cuffs with thumb holes. The back is longer to prevent gaps.

XXS - XXXL



FULL ZIP JACKET 400

Art no: 7234

Full zip jacket has a high, double thick collar as well as cuffs with thumb holes. The back is longer to prevent gaps, and the collar has the Woolpower logo knitted in.

XXS - XXXL



ZIPTURTLENECK 400

Art no: 7224

Long sleeved turtleneck has a short zipper for ventilation and no lengthwise seams. The back is longer to prevent gaps. Cuffs are knitted in.

XXS - XXXL



LONG JOHNS WITH FLY 400

Art no: 6344

Long Johns with fly are made of circular knit fabric and have no lengthwise seams. A gusset in the back ensures optimal comfort. Cuffs are knitted in.

S - XXXL



LONG JOHNS 400

Art no: 7344

Long Johns are made of circular knit fabric and have no lengthwise seams. A gusset in the back ensures optimal comfort. Cuffs are knitted in.

XXS - XXXL



VEST 400

Art no: 7244

Full zip vest has a double thick collar, a straight bottom hem and is made of circular knit fabric. The collar has the Woolpower logo knitted in as well as an embroidered Woolpower logo on the chest.

XXS - XXXL





ONE PIECE SUIT 400

Art no: 7384

One-piece suit has a full front, two-way separating zipper, a high, double thick collar and is made of circular knit fabric. Cuffs have thumb holes.

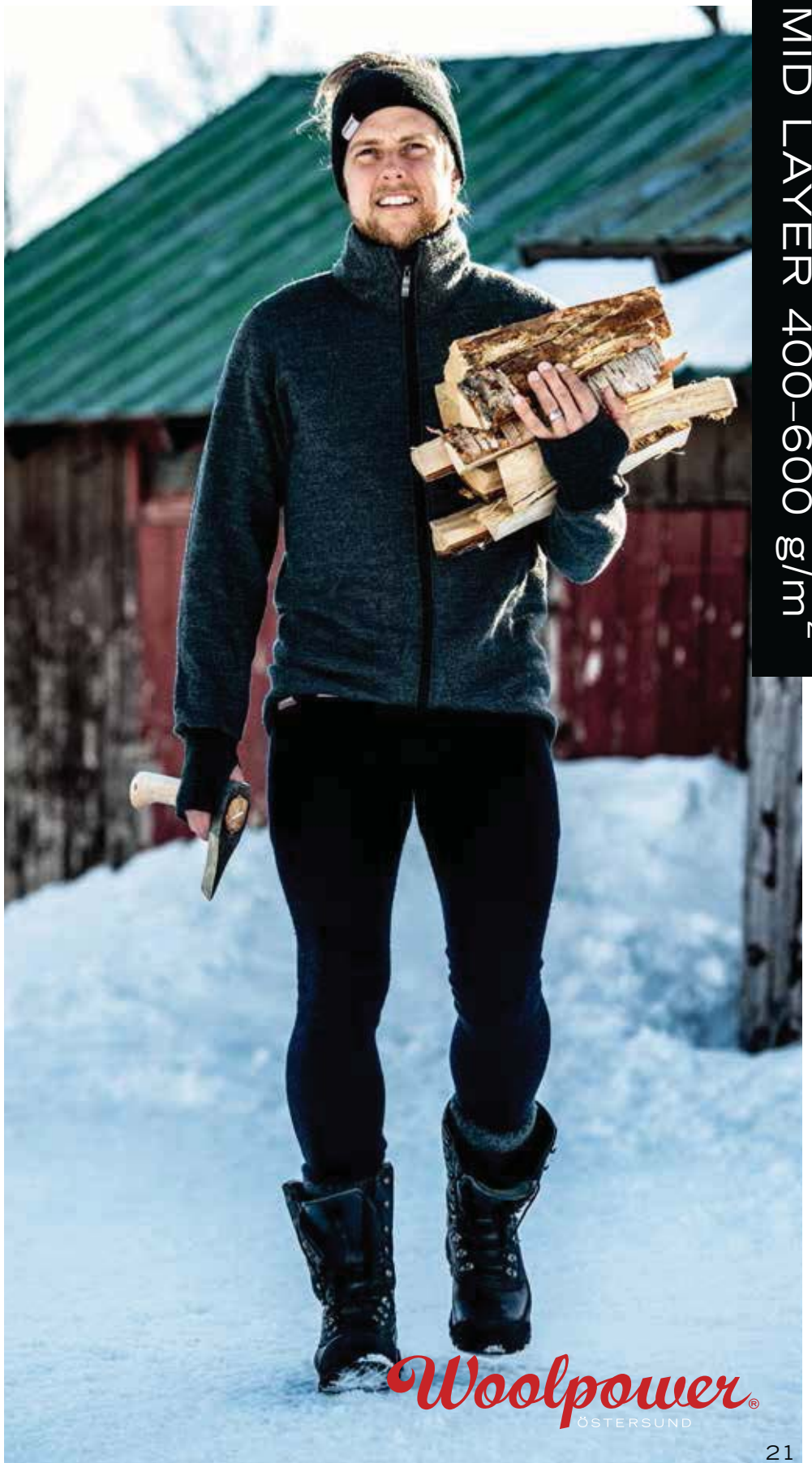
S - XXXL



REFERENCES MID LAYER



SIZE	COLOUR		
XXS	10	BLACK	00
XS	20	GREY	10
S	30	DARK NAVY	89
M	55	GREEN	98
L	66		
XL	70		
XXL	80		
XXXL	90		



MID LAYER 400-600 g/m²

Woolpower[®]
ÖSTERSUND

MID LAYER COLOUR COLLECTION 400 g/m²

Colour Collection is a mid layer with exactly the same focus on functionality as our standard models.

What's different is that the garments come in colours that may vary over the years.

The design is also slightly different. The jackets in Colour Collection aren't longer in the back and don't have thumb holes on the cuffs.

400 g/m²

70% MERINO WOOL
28% POLYAMIDE
2% ELASTANE



DID YOU KNOW?

Something else that's unique about wool garments is that they don't need frequent washing. Wool does not easily hold odours because it contains a substance called creatine that naturally breaks down bad smelling bacteria. So just air the garments out and they will quickly feel fresh again.

Woolpower[®]
ÖSTERSUND

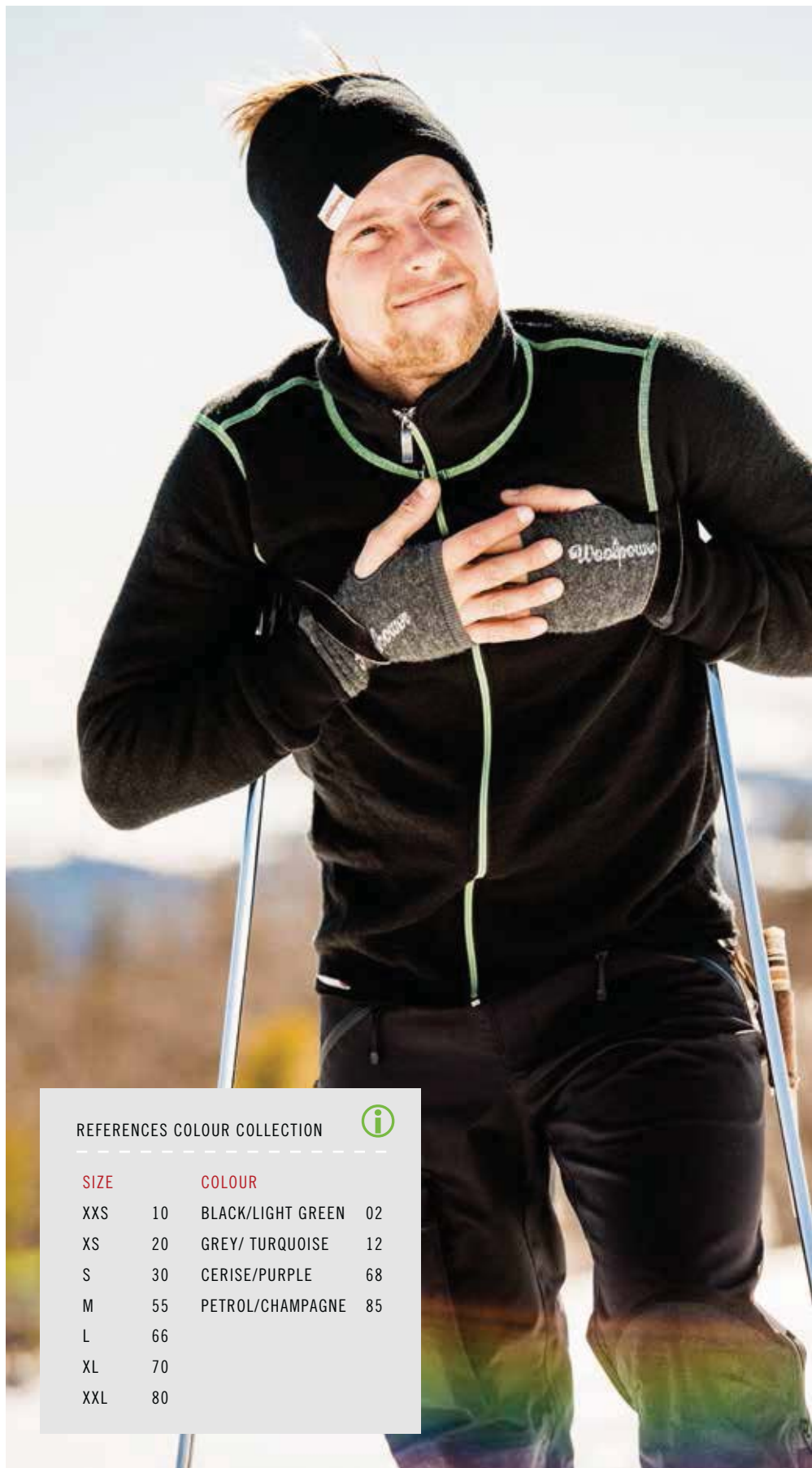


FULL ZIP JACKET 400

Art no: 7214

Full zip jacket has a high, double thick collar with the Woolpower logo knitted in. The jacket is made of circular knit fabric, has a straight hem and doesn't have thumb holes on the cuffs.

XXS - XXL



REFERENCES COLOUR COLLECTION

SIZE		COLOUR	
XXS	10	BLACK/LIGHT GREEN	02
XS	20	GREY/ TURQUOISE	12
S	30	CERISE/PURPLE	68
M	55	PETROL/CHAMPAGNE	85
L	66		
XL	70		
XXL	80		



Woolpower[®]
ÖSTERSUND

KIDS COLLECTION 200–400 g/m²



Children's active lives require a lot of their equipment. Their clothes need to be comfortable to wear, fully flexible and resistant to wear-and-tear.

Last year Woolpower presented a New Kids Collection consisting of a wider and more comprehensive range. Newly launched products included felt insoles, made of Woolpower's production waste.

The garments are soft and comfortable and fit easily and lightly on the body.

All garments for children are available in sizes 86 – 140 cm long.

400 g/m²

70% MERINO WOOL
28% POLYAMIDE
2% ELASTANE

200 g/m²

60% MERINO WOOL
25% POLYESTER
13% POLYAMIDE
2% ELASTANE

Socks 200 g/m²

50% MERINO WOOL
45% POLYAMIDE
5% ELASTANE

Socks 400 g/m²

64% MERINO WOOL
32% POLYAMIDE
4% ELASTANE





Woolpower[®]
ÖSTERSUND



KIDS FULL ZIP JACKET 400

Art no: 3234

Full zip jacket has an extra thick collar and extra long back to prevent gaps. Cuffs are knitted in for increased elasticity and durability.

86 – 92 • 98 – 104 • 110 – 116 • 122 – 128 • 134 – 140



KIDS VEST 400

Art no: 3244

Full zip vest has an extra thickness collar and a straight bottom hem.

86 – 92 • 98 – 104 • 110 – 116 • 122 – 128 • 134 – 140



KIDS ZIPTURTLENECK 200

Art no: 3222

Long sleeved turtleneck shirt has a short zipper for ventilation, is made of circular knit fabric and has no lengthwise seams. The back is longer to prevent gaps. Cuffs are knitted in.

86 – 92 • 98 – 104 • 110 – 116 • 122 – 128 • 134 – 140



KIDS LONG JOHNS 200

Art no: 3342

Long johns are made of a circular knit fabric, and have no lengthwise seams. A gusset in the back ensures optimal comfort. Cuffs are knitted in.

86 – 92 • 98 – 104 • 110 – 116 • 122 – 128 • 134 – 140



KIDS SOCKS

200

Art no: 3412

Socks have terry-knit feet and rib-knit shafts.

19 – 21 • 22 – 24 • 25 – 27 • 28 – 31 • 32 – 35



KIDS SOCKS

LOGO 400

Art no: 3424

Socks have terry-knit feet and rib-knit shafts and a knitted Woolpower logo on the shaft.



KIDS CREWNECK 200

Art no: 3112

Kids crewneck is made of a circular knit fabric and has no lengthwise seams. The back is longer to prevent gaps. Cuffs are knitted in for increased elasticity and durability.

86 – 92 • 98 – 104 • 110 – 116 • 122 – 128 • 134 – 140



KIDS BALACLAVA

200

Art no: 3652

Balaclava has a single opening that can be configured to cover everything but the eyes. The lower edge of the opening can be pulled below the nose or the mouth for venting options.



KIDS MOCK

TURTLENECK 200

Art no: 3632

Mock turtleneck makes a fine complement to the crewneck. It's nice and warm around the neck.

2 – 5 years • 6 – 10 years



ISPO AWARD
GOLD WINNER
2014/2015



KIDS FELT INSOLES

Art no: 5705

Felt Insoles made of production waste from garments in various colours.

Size: see chart
Colour: Recycle Grey

REFERENCES KIDS COLLECTION



CLOTHES

86–92
98–104
110–116
122–128
134–140

FELT INSOLES

02 24–25 71
04 26–27 72
06 28–29 73
08 30–31 74
09 32–33 75
34–35 76

SOCKS

19–21
22–24
25–27
28–31
32–35

COLOURS

21 PIRATE BLACK 00
24 DOLPHIN BLUE 84
27 SEA STAR ROSE 64
31 TURTLE GREEN 94
35 RECYCLE GREY 14

BALACLAVA & TURTLENECK

2–5 YEARS 03
6–10 YEARS 07

SOCKS

Woolpower has been making socks for different temperatures, activities and situations ever since the early 70's. This long experience and knowledge about how important it is to have dry and warm feet is reflected in our wide range of products.

Keeping your feet warm and dry is essential to staying comfortable. Whatever your need, Woolpower's sock range keeps your feet in the best shape possible, all year around.

Woolpower make both terry-knitted socks, 200–800 m², and flat-knitted liners. Both techniques provide excellent insulating functionality and retain warmth even when wet. They absorb and transport perspiration away from the skin while still keeping you warm. They contain polyamide, which increases form stability and durability.

Liners

60% MERINO WOOL
35% POLYAMIDE
5% ELASTANE

Socks 200 g/m²

50% MERINO WOOL
45% POLYAMIDE
5% ELASTANE

Socks logo 400 g/m²

64% MERINO WOOL
32% POLYAMIDE
4% ELASTANE

Socks and Knee high 400 g/m²

64% MERINO WOOL
36% POLYAMIDE

Socks 600 g/m²

60% MERINO WOOL
40% POLYAMIDE

Socks 800 g/m²

70% MERINO WOOL
30% POLYAMIDE





GREAT TO COMBINE
WITH OUR
FELT INSOLES



Woolpower.
ÖSTERSUND

SHOE LINER

Art no: 8401

A flat-knit short sock with elastane for snug, comfortable fit. Integrated toe seam. Logo and size information are knitted in.



36 - 39 • 40 - 44 • 45 - 48



LINER CLASSIC

Art no: 8411

A flat-knit sock with elastane for snug, comfortable fit. Integrated toe seam. Logo and size information are knitted in.



36 - 39 • 40 - 44 • 45 - 48



LINER KNEE-HIGH

Art no: 8481

A flat-knit knee-high sock with elastane for snug, comfortable fit. Integrated toe seam. Logo and size information are knitted in.



36 - 39 • 40 - 44 • 45 - 48



SOCKS 200

Art no: 8412

Socks have terry knit feet and rib-knit shafts.



36 - 39 • 40 - 44 • 45 - 48



SOCKS 400

Art no: 8414

Socks have terry knit feet and shafts.



36 - 39 • 40 - 44 • 45 - 48



SOCKS LOGO 400

Art no: 8424

Socks have terry knit feet and rib-knit shafts, and a knitted-in Woolpower logo on the shaft.



36 - 39 • 40 - 44 • 45 - 48



SOCKS KNEE-HIGH 400

Art no: 8484

Socks have terry knit feet and shafts.



36 - 39 • 40 - 44 • 45 - 48



SOCKS 600

Art no: 8416

Socks have terry knit feet and shafts.



36 - 39 • 40 - 44 • 45 - 48



SOCKS KNEE-HIGH 600

Art no: 8486

Socks have terry knit feet and shafts.



36 - 39 • 40 - 44 • 45 - 48



REFERENCES SOCKS



SIZE	COLOUR	
37-39 (800g)	37	BLACK 00
36-39	39	GREY 10
40-42 (800g)	42	GREY MELANGE 13
40-44	44	WHITE 21
43-45 (800g)	45	CERISE 67
45-48	47	PETROL 87
46-48 (800g)	48	DARK NAVY 89
		GREEN 98

SOCKS BRUSHED 600

Art no: 8456

Socks have terry knit feet and shaft. The terry loops have been brushed for a smoother and more comfortable surface.



36 - 39 • 40 - 44 • 45 - 48



SOCKS 800

Art no: 8418

Socks have terry knit feet and shafts.



37 - 39 • 40 - 42 • 43 - 45 • 46 - 48





Woolpower[®]
ÖSTERSUND

ACCESSORIES

200–400 g/m²

The unique Woolpower Ullfrotté Original fabric is useful in so many ways and situations.

Our range of accessories, for example, fills the need to keep smaller body parts warm.

Keeping hands and heads warm is particularly important to maintain the body's right temperature balance.

This year, we're launching a new headband in Ullfrotté Original. And following the success of our insoles made from recycled merino wool, we're now also launching slippers in the same material – The Woolpower Slipper.

200 g/m²

60% MERINO WOOL
25% POLYESTER
15% POLYAMIDE

400 g/m²

70% MERINO WOOL
30% POLYAMIDE





Woolpower[®]
ÖSTERSUND

NEW

HEADBAND 200

Art no: 9612

Our Headband has returned! The headband is made of double layers of 200 terryknit. This creates great loft which insulates the body heat, at the same time the loose knit does not block excessive heat if you are working hard.

One Size 



HELMET CAP 400

Art no: 9644

The snug fitting helmet liner covers the head and neck.

One Size   



CAP 400

Art no: 9624

Cap has double layers of terry knit fabric for optimal insulation.

One Size 



MITTENS THIN 400

Art no: 9744

Mittens Thin are made from single layered terry knit fabric and are excellent as warmer liners for mittens. The seam is on the outside.

M - L 



MITTENS 400

Art no: 9754

Mittens are made from double layered terry knit fabric for optimal insulation and are excellent as warmer liners for shell mittens.

M - L   



WRIST GAITER 200

Art no: 9672

Wrist gaiter with thumb hole is made from circular knit fabric with terry loops on the inside. It has the Woolpower logo knitted in and is 18 cm long.

One Size   



BALACLAVA 200

Art no: 9652

Balaclava has a single opening that can be configured to cover everything but the eyes. The lower edge of the opening can be pulled below the nose or the mouth for ventilation options.

S • L   



BALACLAVA 400

Art no: 9654

Balaclava has a single opening that can be configured to cover everything but the eyes. The lower edge of the opening can be pulled below the nose or the mouth for ventilation options. The neck is long for extra coverage.

One Size   



BELLY WARMER 200

Art no: 9512

Belly warmer for pregnant women has an elastic upper edge and no lengthwise seams. It is knitted with a smooth surface on the outside and terry loops on the inside.

One Size 



TUBE 200

Art no: 9602

Tube 200 is made of circular terry knit fabric and is 30 cm long. Can be used as headband and neck gaiter

One Size 



WOOLCARE

Art. no 10490000

A Woolwash gentle to both the environment and your clothes. It contains no enzymes and only low-impact renewable surfactants. The woolen garment will be clean and long lasting. It also contains the natural wool fat lanolin to protect the delicate fibers of wool. All our products can be washed at 60 ° C (140° F).

500 ml = 20 washes



**ISPO AWARD
GOLD WINNER**
2014/2015

FELT INSOLES

Art. no 5715

Award winning felt Insoles made of production waste from garments in various colours. Can be worn even indoors due to their insulating and moisture management properties.

Size: see chart
Colour: Recycle Grey



NEW



WOOLPOWER SLIPPER

Art. no: 9725

From our own fabric waste, and in collaboration with Docksta shoe factory, we have developed our own Woolpower slipper. The slipper is made of Woolpower's award winning felt material, and is used both in the outer and insole of the slipper. The slipper is for indoor use only since the outer sole has not been developed for outdoor use.

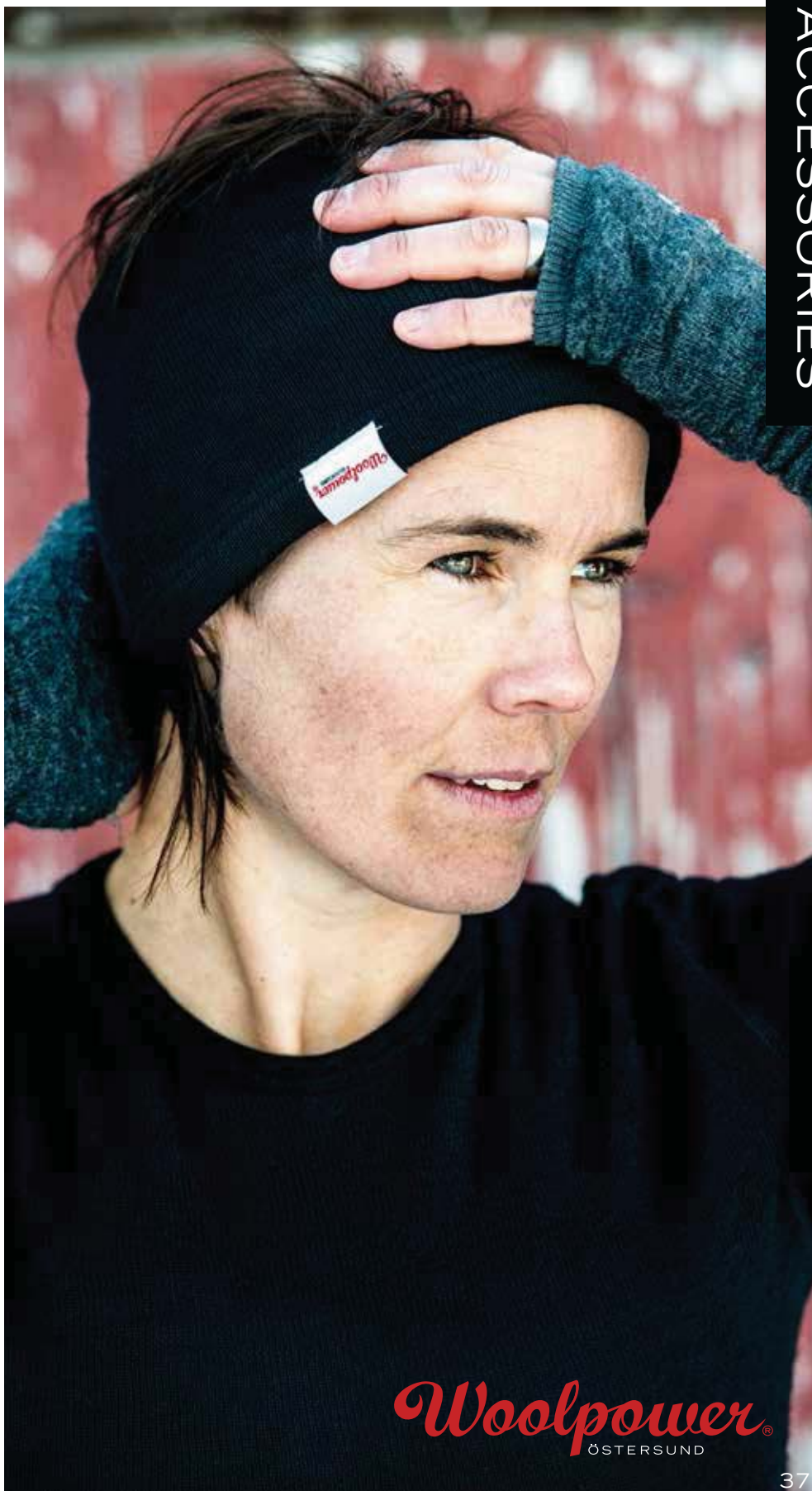
Size: see chart

Colour: Recycle Grey

REFERENCES ACCESSORIES



SIZE		SIZE SLIPPERS	
S	30	36	50
M	55	37	51
L	66	38	52
ONE SIZE	00	39	53
SIZE INSOLES		40	54
36-37	81	41	56
38-39	82	42	57
40-41	83	43	58
42-43	84	44	59
44-45	85	45	60
46-47	86	46	61
COLOUR		47	62
BLACK	00		
GREY	10		
RECYCLE GREY	14		
CERISE/PURPLE	68		
PETROL/CHAMPAGNE	85		
DARK NAVY	89		
GREEN	98		



Woolpower[®]
ÖSTERSUND

WOOLPOWER AROUND THE WORLD



AUSTRIA

Scandic Outdoor GmbH
+ 49 4105-68130
info@scandic.de

BELGIUM

Hike-A-Way
+ 32 1660-9607
info@hikeaway.be

CANADA

Young & MacKenzie
Distribution
+ 1 905-278 4535
info@youngandmackenzie.ca

CHINA

Woolpower AB
+ 46 63 14 85 20
info@woolpower.se

CZECH REPUBLIC

Woolpower AB
+ 46 63 14 85 20
info@woolpower.se

DENMARK

Ragtex APS
+ 45 47-93 76 48
ragtex@ragtex.dk

FAROE ISLANDS

ADC-Heilsolan
+ 298 315 828
adc@adc.fo

FINLAND

Berner Oy, Sport-osasto
+ 358 207 91 4000
sport@berner.fi

FRANCE

Mountain Distribution
+ 33 609 260 567
mountain.distrib@wanadoo.fr

GERMANY

Scandic Outdoor GmbH
+ 49 4105-68130
info@scandic.de

GREECE

Stop S.A.
+ 30 210 462 68 00
info@stop.com.gr

ICELAND

Safalinn
+ 354 568-9394
safalinn@safalinn.is

JAPAN

BOY's CO., LTD
+ 81-78-332-5874
sales@boys-bshop.co.jp

NETHERLANDS

Professional: PWG
+ 31 113 213 440
info@pwg.nl

NETHERLANDS

Outdoor: Hike-A-Way
+32 1660-9607
info@hikeaway.be

NORWAY

Ullfrotté Orginal A/S
+ 47 69-80 71 00
woolpower@woolpower.no

POLAND

Sportsmen
+ 32 601 2075
biuro@sports-men.pl

RUSSIA

Folgreb
+ 7 812-303 96 00
management@folgreb.ru

SLOVAKIA

Woolpower AB
+ 46 63 14 85 20
info@woolpower.se

SOUTH KOREA

Parkers International Co.Ltd.
+82 2 3662 3974
helper@parkers.co.kr

SPAIN

Teyde, TECNOLOGIA
Y DESARROLLO
+ 34 91 351 90 99
info@teyde.es

SWITZERLAND

Scandic Outdoor GmbH
+ 49 4105-68130
info@scandic.de

TAIWAN

Outdoor Active
International Co. Ltd
+ 886-2-2793 8616
johnling@ms49.hinet.net

UNITED KINGDOM

Woolpower AB
+ 46 63 14 85 20
info@woolpower.se

UNITED STATES

Grand Forest Inc
+ 1 843 875 0240
info@grandforest.us

PRODUCTION: Woolpower AB, Östersund, Sweden, October 2014

PHOTOS: Gösta Fries, Stéphane Lombard, Tommy Andersson, Klas Fritzon, and MIM- bild

DESIGN: Stéphane Lombard



HOW TO ORDER

Order on-line: woolpower.se | **E-mail:** order@woolpower.se | **Telephone:** +46 63 14 85 20



The complete article number has **eight digits**. The first four digits describe the model. The two following digits describe the colour of the product and the last two the size.

EXAMPLE: ORDERING A ZIP TURTLENECK 200 BLACK MEDIUM



ZIPTURTLENECK 200

Art no: 7222

XXS - XXXL



UNISEX = 7
 ZIP TURTLENECK = 22
 200 g/m² = 2
 BLACK = 00
 M = 55



Complete article number is:

72220055

All sizes are made to fit both men and women and the sizes are unisex except for Boxers/Briefs and Long Johns in the LITE collection, which are made in Men's and Women's. Most of our garments are available in eight different sizes, XXS-XXXL, and socks are made from size 19 to 48.

SIZES	XXS	XS	S	M	L	XL	XXL	XXXL
WOMEN	32-34	36-38	40-42	44-46	48-50			
MEN		42-44	46-48	50-52	54-56	58-60	62-64	66-68
	XXS	XS	S	M	L	XL	XXL	XXXL
CHEST (cm)	76-82	82-90	90-98	98-106	106-114	114-122	122-130	130-138
WAIST (cm)	58-66	66-74	74-82	82-90	90-100	100-110	110-120	120-130
HIPS (cm)	82-90	90-98	98-106	106-114	114-122	122-130	130-138	138-146
INSEAM (cm)	68-76	70-78	72-80	74-82	76-84	78-86	80-88	82-90
	XXS	XS	S	M	L	XL	XXL	XXXL
CHEST (Inches)	30-32	32-35	35-39	39-42	42-45	45-48	48-51	51-54
WAIST (Inches)	23-26	26-29	29-32	32-35	35-39	35-39	43-47	47-51
HIPS (Inches)	32-35	35-39	39-42	42-45	45-48	48-51	51-54	54-57
INSEAM (Inches)	26-30	27-31	28-31	29-32	30-33	31-34	31-35	32-35



CONTACT

HEAD OFFICE SWEDEN

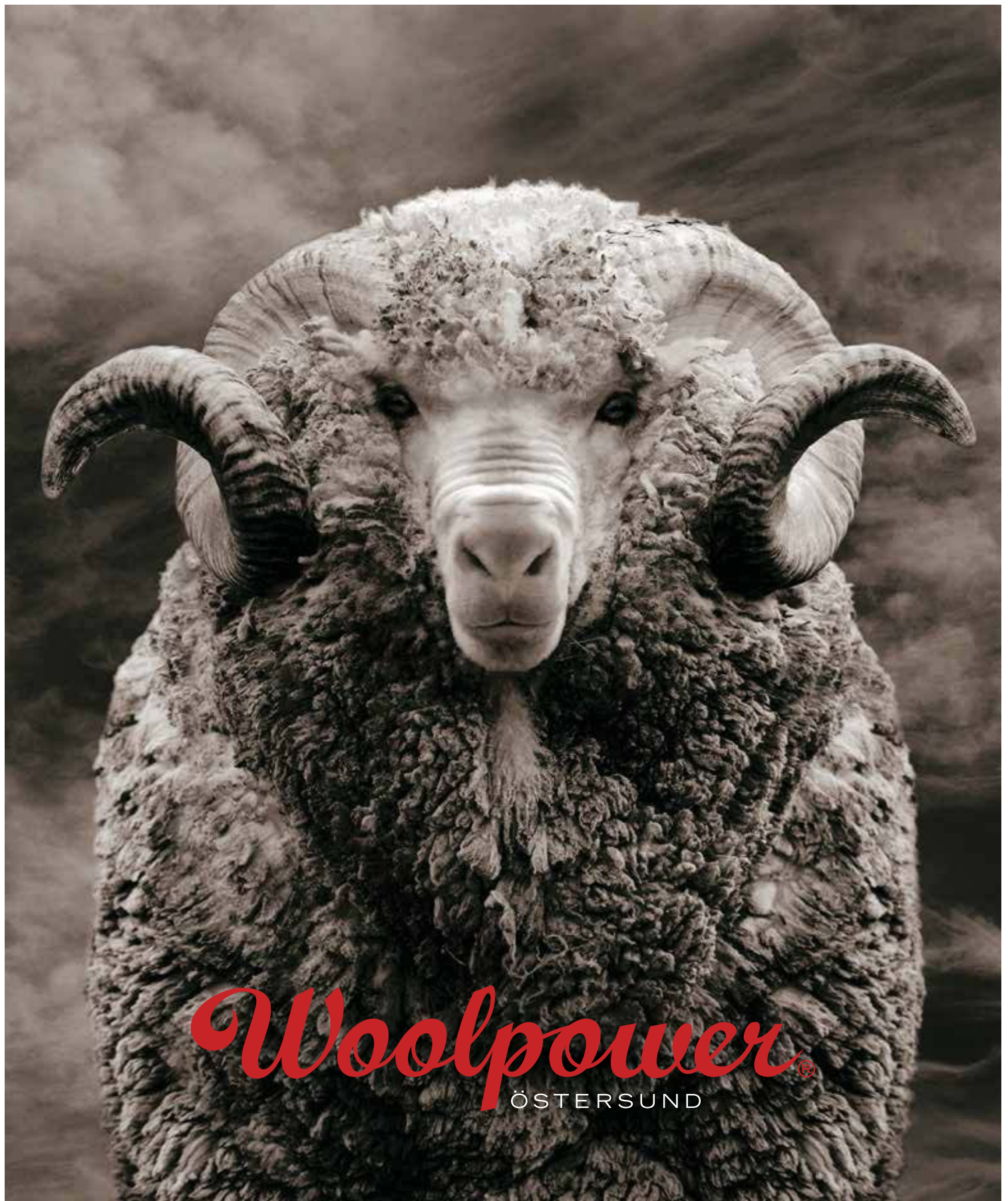
Woolpower AB

Chaufförvägen 29
 831 48 Östersund
 Sweden

+46 (0)63 148520
 info@woolpower.se

woolpower.se





Woolpower®
ÖSTERSUND